

# PERFORMANCE REPORT Safer Plymouth Partnership Thursday 23 July 2015



**LIST OF CONTENTS:**

**1. Exception Items**

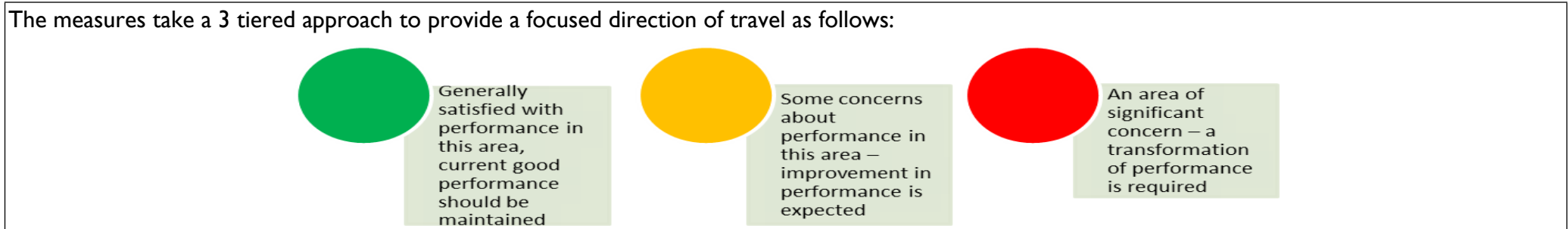
**2. Current iQuanta Family Group Position**

**3. Performance Measures:**

- Closing the Gap in overall crime
- Increase reporting of Domestic Abuse
- Increase referrals to Domestic Abuse Services
- Number of professionals in receipt of DASH training
- Reduce Anti-Social behaviour
- Number of vulnerable victims assessed as appropriate for support by the ASB Victim Champion Service, who get the service they need
- Satisfaction rate of vulnerable victims of ASB with the service they receive
- % of vulnerable ASB victims whose quality of life score has improved
- Reduce Serious Acquisitive crime (monitoring levels only)
- Increase number of racist, disablist, homophobic and faith incidents reported
- Increase the % satisfied with outcome of reported racist, disablist, homophobic, faith & belief incidents
- Reduce Serious Acquisitive crime (monitoring levels only)

**4. Performance on Strategic Assessment Recommendations**

To demonstrate how we are performing, we have now adopted the Police and Crime Commissioner’s performance framework as illustrated below:



## 1. EXCEPTION ITEMS:

### **KEY RISKS AND PERFORMANCE ISSUES, BY EXCEPTION, INCLUDING ANY HIGHLIGHTED BY CHAIRS OF DELIVERY GROUPS**

#### **Closing the gap in overall crime between the 10 neighbourhoods with the highest crime rates and the city average per 1,000 population**

##### **GENERALLY SATISFIED WITH PERFORMANCE – (2015/16 performance measure - “gap of not more than 77.3”)**

- In quarter one we have seen a very slight increase in the number of overall crime, there have been 4799 between April and June compared to 4786 in quarter one last year. This equates to a reduction of less than 1%.
- At the end of quarter one we are on target to achieve the closing of the gap target, at the end of June the gap is 18, below the target of 19.6.

#### **Increase Reporting of Domestic Violence (Crimes and Incidents)**

##### **SOME CONCERNS ABOUT PERFORMANCE IN THIS AREA: (within 15% of performance measure) - (2015/16 performance measure - record more than 6587 crimes)**

- In quarter one we have seen an overall reduction of 6% (-107) in overall crime/ incidents recorded compared to the same period last year.
- This measure is retained to monitor the impact of actions taken by partners in response to the reduction in reporting of DA in 2014/15.

#### **Increase referrals to Domestic Abuse Services**

##### **AREA OF SIGNIFICANT CONCERN: (outside of 15% of performance measure) - (2015/16 performance measure – to receive more than 2665 referrals)**

- In quarter one there have been 525 referrals to the domestic abuse service. This is 104 referrals less than the same period in 2014/15. As a result at the end of quarter one we are off target to increase referrals by the end of the year.

#### **Number of professionals in receipt of DASH training**

##### **GENERALLY SATISFIED WITH PERFORMANCE – (2015/16 performance measure – at least 200 professionals to attend DASH training)**

- In quarter one 58 people have attended DASH training; this means that we are on course to achieve the target of 200 by the end of the year.

#### **Reduce the rate of Anti-Social Behaviour incidents**

##### **GENERALLY SATISFIED WITH PERFORMANCE - (2015/16 performance measure of not more than 10,064 Incidents)**

- In quarter one 2015/16 we have seen a reduction of 7% (-186) compared to the same period last year.
- Levels of ASB were higher in April and May than corresponding years in 2014/15 but levels dropped significantly in June.

#### **The number of racist, disablist, homophobic and faith incidents reported**

##### **GENERALLY SATISFIED WITH PERFORMANCE – (2015/16 performance measure to record 621 incidents)**

(Plymouth City Council performance measure) In quarter one 174 incidents have been recorded; this means we are on course to achieve this target.

**Reduce Serious Acquisitive Crime – MONITORING ONLY**

**SOME CONCERNS ABOUT PERFORMANCE IN THIS AREA**

- In quarter one the increase in serious acquisitive crime has continued. At the end of quarter one we have recorded 17% more serious acquisitive crime offences than the same period last year. This is particularly being driven by continued increases in vehicle offences.

**Performance Indicators associated with the support to vulnerable victims of ASB and that track the impact of ASB interventions continue to be developed and will be ready for reporting at the next board. Targets have been agreed around numbers of vulnerable victims seen, their satisfaction rates and how their quality of life has been affected.**

**Safer Plymouth will monitor the measure the CRC has in relation to offenders on more than 1 day/less than 12 month licences – who are known to be the most likely to reoffend. The CRC must ensure that a minimum of 75% of this cohort do not go back to court for revocation of an order at any time.**

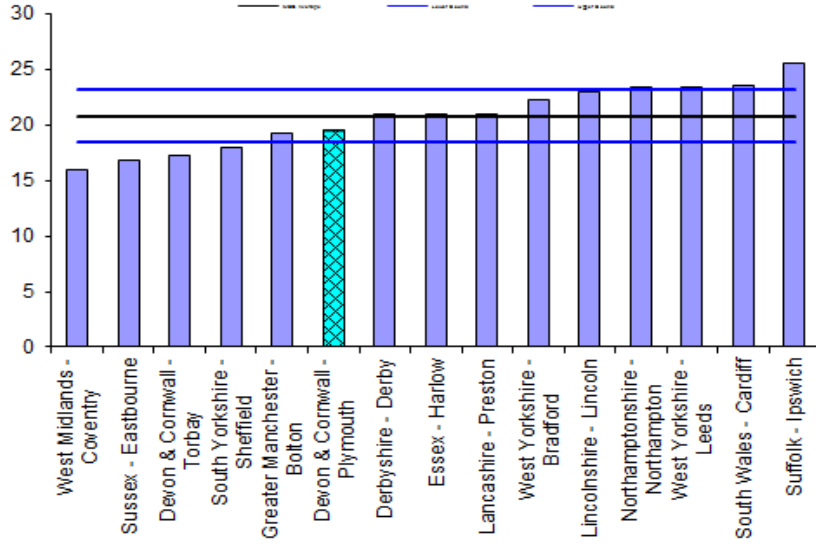
**Safer Plymouth will also monitor a performance measure from the National Probation Service (NPS), with performance still to be identified via consultation with the NPS.**

**FINANCE & RESOURCES**

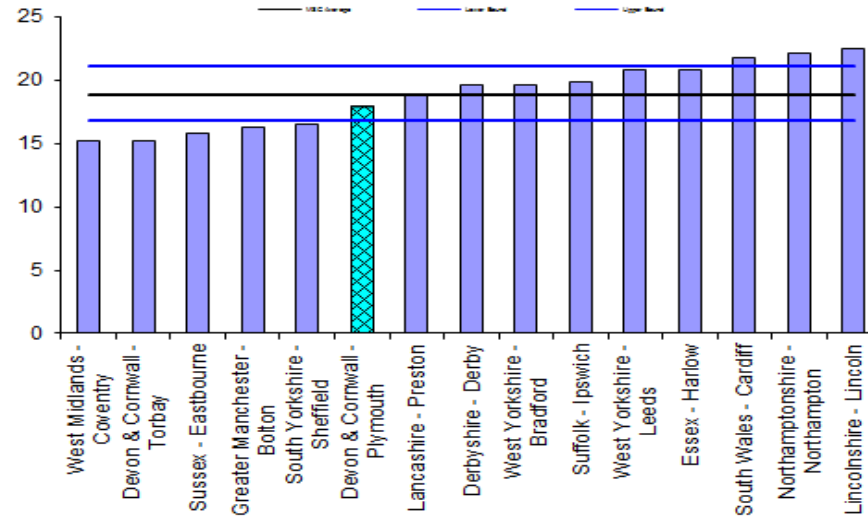
These will be items on the Agenda.

## 2. CURRENT OVERALL FAMILY GROUP POSITION:

iQuanta Barchart MSG - Crimes per 1000 Residents  
All Crime 01 April 15 – 30 June 2015



iQuanta Barchart MSG - Crimes per 1000 Residents  
All Crime 01 January 15 – 31 March 2015



### 3. PERFORMANCE MEASURES:

#### Closing the gap in overall crime between city rate and priority neighbourhoods

**GENERALLY SATISFIED WITH PERFORMANCE – (2015/16 performance measure - “gap of not more than 77.3”)**

	12/13.	13/14.	14/15	Apr	May	Jun	Jul	Aug	Sep	Oct	Nov	Dec	Jan	Feb	Mar
<b>Reduce the Gap between the worst 10 neighbourhoods &amp; city average per 1000* (one month behind)</b>															
Gap 2015 - 2016		76.3	77.4	6.5	12.6	18									
Gap 2014 - 2015				6.90	13.50	19.60	26.40	32.50	39.30	45.80	52.20	58.40	64.20	70.60	77.40
Target Gap 15/16				6.44	12.88	19.32	25.76	32.2	38.64	45.08	51.52	57.96	64.4	70.84	77.3
All Crime Culmative 2014 - 2015				1612	3158	4786	6369	7876	9425	10991	12545	14163	15649	17142	18822
All Crime Culmative 2015 - 2016	18,713	18,953	18,822	1662	3368	4799	4799	4799	4799	4799	4799	4799	4799	4799	4799
% difference in All Crime 13/14 - 14/15				3%	7%	0%									

#### To Increase Reporting of Domestic Violence. (Crimes and Incidents)

**SOME CONCERNS ABOUT PERFORMANCE IN THIS AREA: (within 15% of performance measure) - (2015/16 performance measure - record more than 6587 crimes)**

	12/13.	13/14.	14/15	Apr	May	Jun	Jul	Aug	Sep	Oct	Nov	Dec	Jan	Feb	Mar
<b>Increase Reporting of Domestic Violence. (Crimes and Incidents)</b>															
Actual 2014 - 2015		7103	6587	542	572	625	662	564	528	519	544	587	480	488	476
Actual 2015 - 2016				556	572	504									
Target 15/16				549	1098	1647	2196	2745	3294	3843	4392	4941	5490	6039	6588
Cum Actuals 14/15				542	1114	1739	2401	2965	3493	4012	4556	5143	5623	6111	6587
Cum Actuals 15/16				556	1128	1632									
% difference in Actuals				3%	1%	-6%	-100%	-100%	-100%	-100%	-100%	-100%	-100%	-100%	-100%

**Increase referrals to Domestic Abuse Services**

**AREA OF SIGNIFICANT CONCERN: (outside of 15% of performance measure) - (2015/16 performance measure – to receive more than 2665 referrals)**

Increase referrals to Domestic Abuse Services				
	Quarter 1	Quarter 2	Quarter 3	Quarter 4
Actual 2014 - 2015	629	727	760	549
Actual 2015 - 2016	525			
Target 14/15	667	1334	2001	2666
Cum Actuals 14/15	629	1356	2116	2665
Cum Actuals 15/16	525			
% difference in Actuals	-104			

**Number of professionals in receipt of DASH training**

**GENERALLY SATISFIED WITH PERFORMANCE – (2015/16 performance measure – at least 200 professionals to attend DASH training)**

Number of professionals in receipt of DASH training				
	Quarter 1	Quarter 2	Quarter 3	Quarter 4
Actual 2014 - 2015	15	15	15	13
Actual 2015 - 2016	58			
Target 14/15	50	100	150	200
Cum Actuals 14/15	15			
Cum Actuals 15/16	58			
% difference in Actuals	43			

**Reduce the rate of Anti-Social Behaviour incidents**

**GENERALLY SATISFIED WITH PERFORMANCE - (2015/16 performance measure of not more than 10,064 Incidents)**

	12/13.	13/14.	14/15	Apr	May	Jun	Jul	Aug	Sep	Oct	Nov	Dec	Jan	Feb	Mar
<b>Reduce Anti-social Behaviour incidents</b>															
Actual 2014 - 2015	14342	10291	10299	808	882	1023	1056	915	982	850	755	682	639	642	831
Actual 2015 - 2016				864	894	769									
Target 15/16				838	1676	2514	3352	4190	5028	5866	6704	7542	8380	9218	10064
Cum Actuals 14/15				808	1690	2713	3769	4684	5666	6516	7271	7953	8592	9234	10065
Cum Actuals 15/16				864	1758	2527									
% difference in Actuals				7%	4%	-7%									

**The number of racist, disablist, homophobic and faith incidents reported**

**GENERALLY SATISFIED WITH PERFORMANCE – (2015/16 performance measure to record 621 incidents)**

	12/13.	13/14.	14/15	Apr	May	Jun	Jul	Aug	Sep	Oct	Nov	Dec	Jan	Feb	Mar
<b>The number of racist, disablist, homophobic and faith incidents reported</b>															
Cumulative average 14/15				55	109	152	208	247	292	354	408	456	504	551	617
Cumulative average 15/16		603	617	58	122	174									
Target required				53	105	157	208	260	312	364	416	468	520	571	621

**To reduce Serious Acquisitive Crime**

**NO PERFORMANCE MEASURE BUT SOME CONCERNS ABOUT PERFORMANCE IN THIS AREA – MONITORING ONLY**

	12/13.	13/14.	14/15	Apr	May	Jun	Jul	Aug	Sep	Oct	Nov	Dec	Jan	Feb	Mar
<b>Serious Acquisitive Crime</b>															
Actual 2014 - 2015	2244	1969	2017	179	155	182	139	162	198	154	168	163	170	171	176
Actual 2014 - 2015				196	195										
Cum Actuals 15/16				196	391										
Cum Actuals 14/15				179	334	516	655	817	1015	1169	1337	1500	1670	1841	2017
% difference in Actuals				9.5%	17.1%										



## 4. Performance on Key Strategic Recommendations from the 2014/15 Strategic Assessment

The following are the agreed key strategic recommendations for the Safer Plymouth Partnership for 2014/15:

Recommendation	Progress
1. Agree the following as priorities for 2015/16; Violence with Injury (excluding Domestic Abuse), Domestic Abuse, Anti-Social Behaviour, Hate Crime, Sexual Violence Reducing Re-offending.	
2. To continue to review the Safer Plymouth partnership plan and deliver against the 11 priorities.	
3. Safer Plymouth to review its priorities in light of the Police and Crime Plan refresh.	
4. Continue to play an active role in supporting the work of the Devon and Cornwall Police and Crime Panel (currently hosted by Plymouth)	
5. Performance management continues to adopt the methodologies set out in the Police and Crime Commissioner Performance framework.	
6. All 'indicated' partner contributions need to be confirmed/ secured in order to deliver all elements of the enhanced/ increase Domestic Abuse service provision. Failure to do so will negatively impact on the service specification and result in a reduced service.	
7. Continue the increase in Domestic Abuse awareness through DASH risk assessment training, targeting of large employers and the increase of self referrals and increasing reporting.	
8. Work in partnership across the peninsula to achieve a block contract for Sexual Assault Referral Centre services to be commissioned across Devon and Cornwall and ensure stability of services.	
9. Work with NHS Commissioning Board to identify a long term solution for children who have experienced sexual assault.	
10. Support and deliver the outcomes in Plymouth from Alcohol Strategy and Commissioning Plan given the impact of alcohol on each of the priorities outlined above.	
11. Continue with a proportionate programme of work to prevent violent extremism, a statutory requirement of Safer Plymouth.	
12. Continue to support the activities and priorities in the "Early Intervention and Prevention Strategy 2012-2015 For Children, Young People and Families" particularly those interventions that will have a positive effect in preventing and protecting young people from becoming involved in crime and risk-taking behaviour.	
13. Agree to continue to monitor levels and trends of acquisitive and serious acquisitive crime and respond to performance concerns.	
14. Plymouth needs to consider the risks and options for potential withdrawal or reduction in Police and Crime Commissioner allocation to Safer Plymouth for 2016/17.	
15. 2015/16 Strategic Assessment to be less focused on Police data and include more partnership and voluntary and community sector based data.	
16. Safer Plymouth to explore findings of the Rotherham report and it's implication on Community Safety.	
17. Endorse the reinstatement of the Plymouth Reducing Reoffending Group.	

